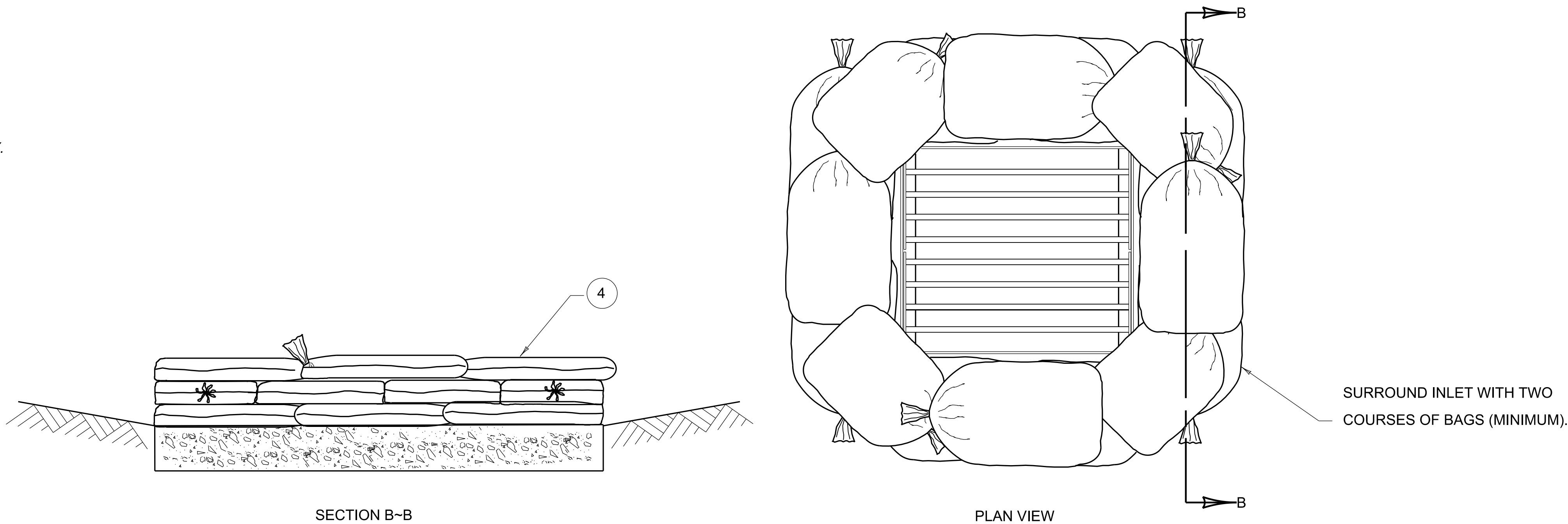
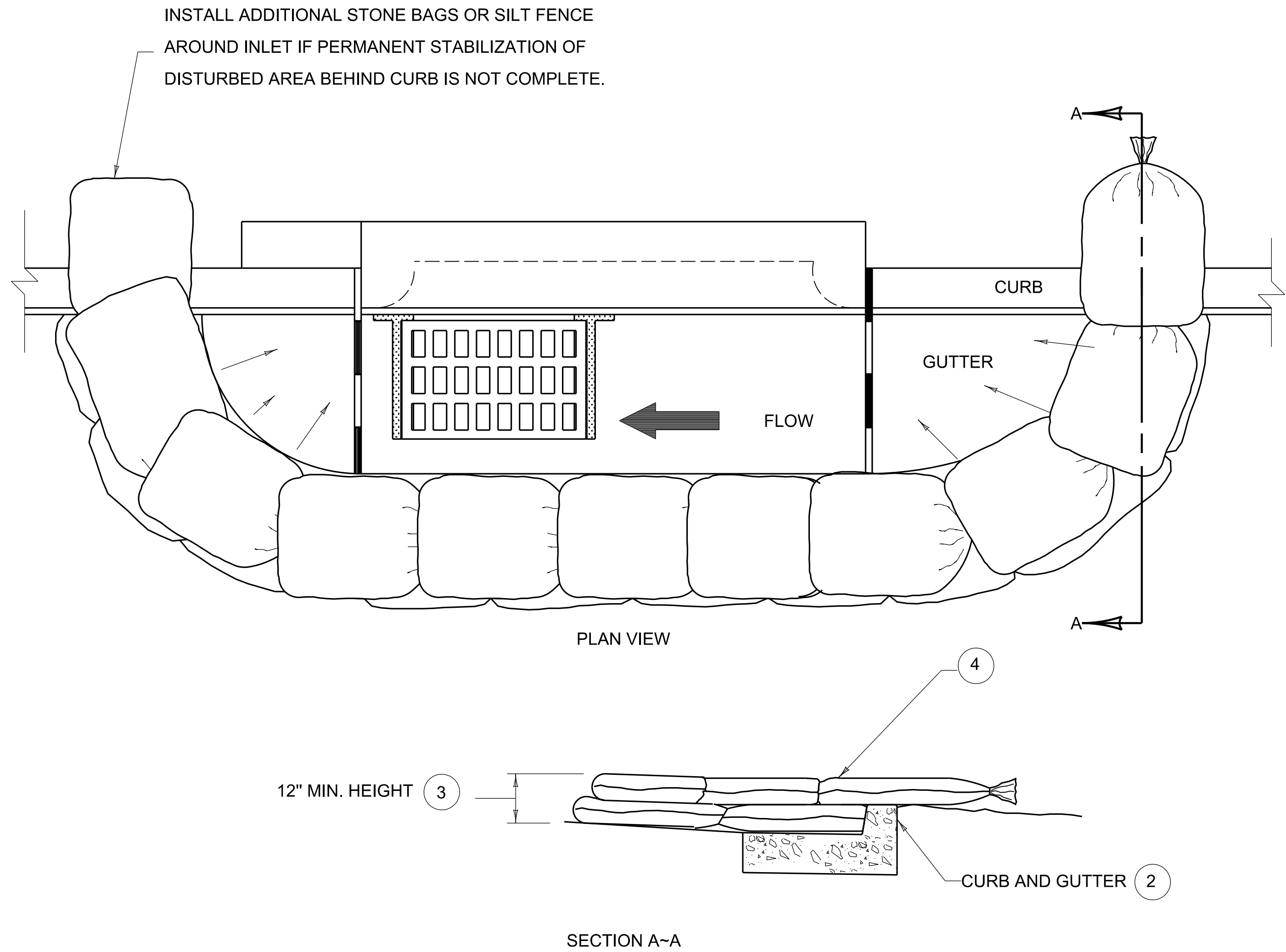


~ NOTES ~

1. SILT TRAP TYPE C SHALL INCLUDE GEOTEXTILE FABRIC BAGS, NO. 57 STONE, LABOR AND ALL INCIDENTALS NECESSARY FOR ONE COMPLETE INSTALLATION.
2. INLET PROTECTION IS SUITABLE FOR USE IN BOTH PAVED AND UNPAVED AREAS.
3. THE HEIGHT REQUIREMENT IS WAIVED IN CASES WHERE IT WILL CREATE AN UNACCEPTABLE PONDING SITUATION ON THE PAVEMENT OR ON AN ADJACENT PROPERTY.
4. INTERWEAVE BAG ENDS TO FILL GAPS BETWEEN BAGS.
5. CONSTRUCT 18" X 30" BAGS OF NON-WOVEN CLASS 1 OR 2 GEOTEXTILE FABRIC CONFORMING TO SECTION 843 OF THE STANDARD SPECIFICATIONS. DOUBLE STITCH BAG SEAMS WITH 1 LB. POLYESTER THREAD. ATTACH ONE (1) TIE STRING TO EACH BAG. BAG OPENING SHALL BE ON 18" SIDE.
6. FILL BAGS WITH NO. 57 STONE BETWEEN ½ TO 1 FULL (50 LB TO 60 LB).
7. SILT TRAP TYPE C SHALL NOT BE USED IN BLUE LINE STREAMS.

BID ITEMS AND UNIT TO BID:

SILT TRAP TYPE C	EACH
CLEAN SILT TRAP TYPE C	EACH



COMMONWEALTH OF KENTUCKY  
DEPARTMENT OF HIGHWAYS

SILT TRAP

SILT TRAP TYPE C

STANDARD DRAWING NUMBER  
RDX-230-02

DRAINAGE

REVISION DATE: 08/11/2025  
REVISION NUMBER: 0

SUBMITTED *W. J. Lujan* 08-11-2025  
DIVISION DIRECTOR DATE

APPROVED *John Ballinger* 08-11-2025  
STATE HIGHWAY ENGINEER DATE